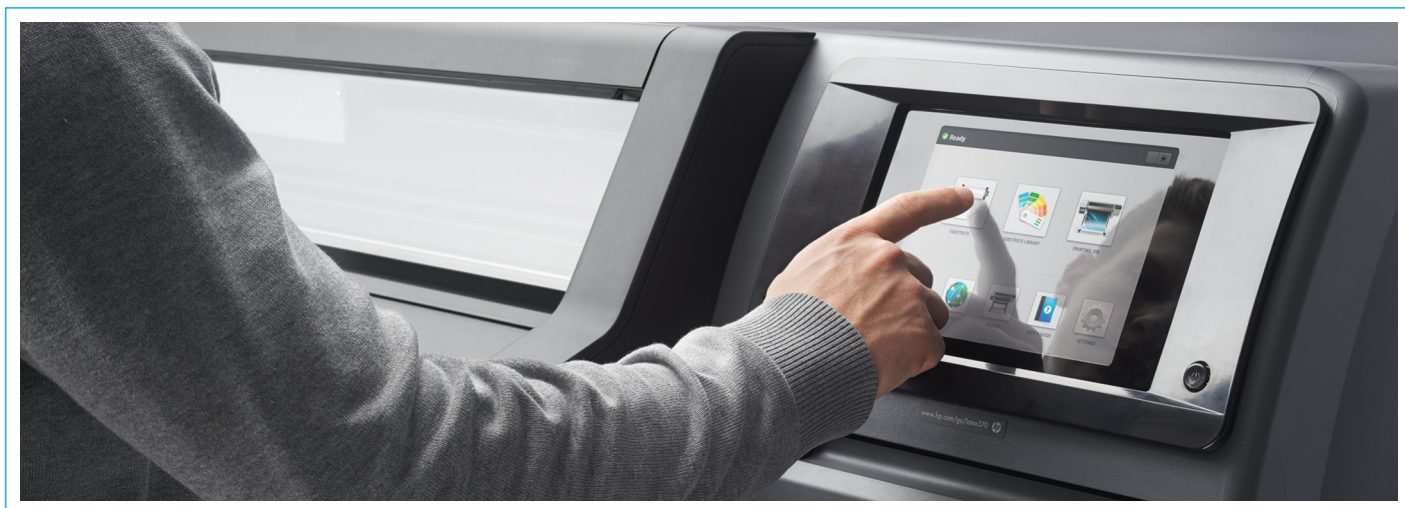




## How to add a device to HP PrintOS



Congratulations on buying your new HP Latex Printer! You're now ready to add your new device to HP PrintOS and start enjoying right away all the benefits of a revolutionary cloud-based print production operating system. In order to use PrintOS, you have to connect a device. Let us show you how to do it in no time!

Click on your device series group to find out how to add a device to PrintOS.

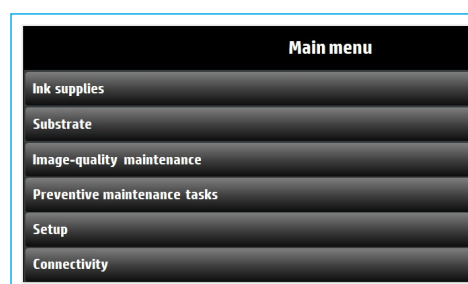
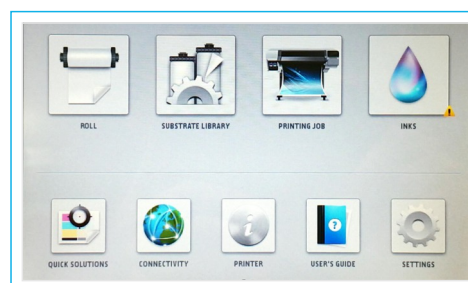
- [Connect your HP Latex 100, 300 & 500 Series Printer](#)
- [Connect your HP Latex 1500 & 3000 Series Printer](#)
- [Connect your HP Latex R Series Printer](#)

### Connect your HP Latex 100, 300 & 500 Series Printer

Head over to your HP Latex printer.

Once in front of your printer's Control Panel, **click on Settings**

Now **click on Setup**

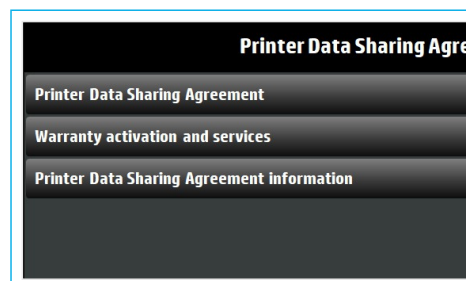




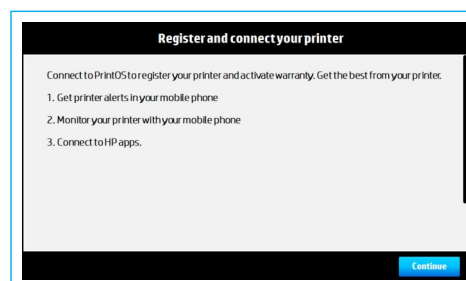
# How to add a device to HP PrintOS

## Connect your HP Latex 100, 300 & 500 Series Printer

Click on the **Printer Data Sharing Agreement** and then **Warranty Activation and Services** and **accept** the terms of agreement.



In the **Register and Connect your Printer** view, click on **Continue**

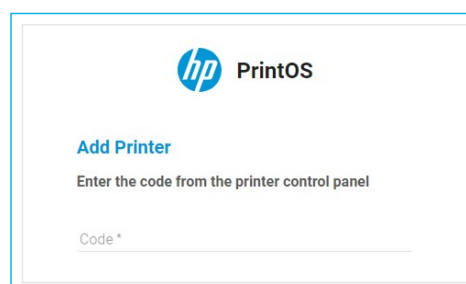


Your printer will now generate a QR code and is ready to be added to PrintOS from your mobile device!

**Scan** the **QR Code** with your smartphone/tablet using either the camera or a QR scanner app.



Alternatively, you may head over to <https://www.printos.com/activate/lf> and activate your printer with a security code, found in the previous QR code generation section.



Great, you're all done! You should now be redirected to the HP PrintOS Sign-In/Sign-Up page.

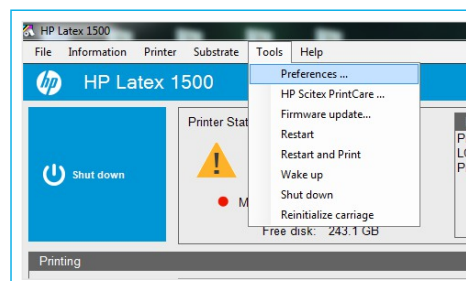
If you need to complete the initial sign up process, head over to the article [“How to sign up to HP PrintOS in 3 easy steps”](#) to continue.



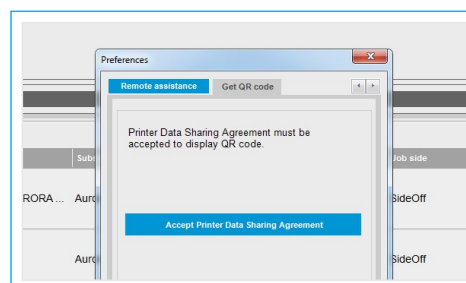
# How to add a device to HP PrintOS

## Connect your HP Latex 1500 & 3000 Series Printer

Once in front of your printer's Internal Print Server, go to the **Tools** tab and click on **Preferences**

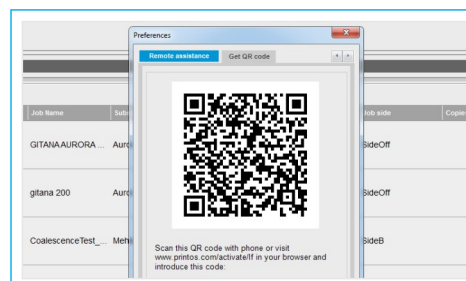


Go to the **Get QR Code** tab and accept the **Printer Data Sharing Agreement**



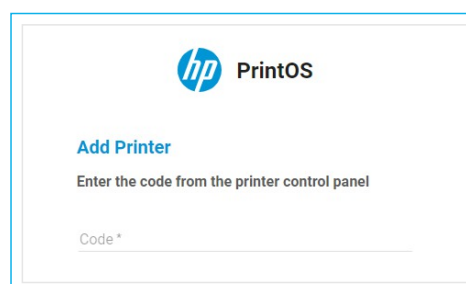
You'll now be asked to **accept** the **HP Privacy Statement and Printer Data Sharing Agreement** to generate the QR code.

Your printer will now generate a QR code and is ready to be added to PrintOS from your mobile device!



**Scan** the QR code with your smartphone/tablet using either the camera or a QR scanner app.

Alternatively, you may head over to <https://www.printos.com/activate/lf> and activate your printer with a security code, found in the previous QR code generation section.



Great, you're all done! You should now be redirected to the HP PrintOS Sign-In/Sign-Up page.

If you need to complete the initial sign up process, head over to the article [“How to sign up to HP PrintOS in 3 easy steps”](#) to continue.

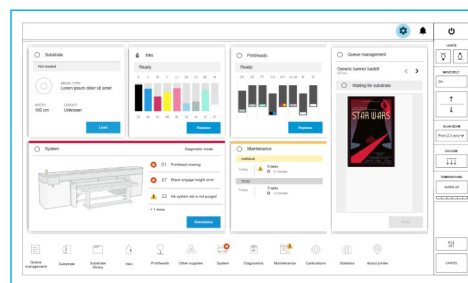


# How to add a device to HP PrintOS

## Connect your HP Latex R Series Printer

Head over to your HP Latex R Series printer.

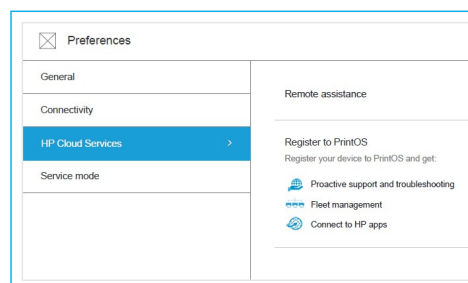
Once in front of your printer's Internal Print Server, open the Settings menu



Now click on the HP Cloud Services heading

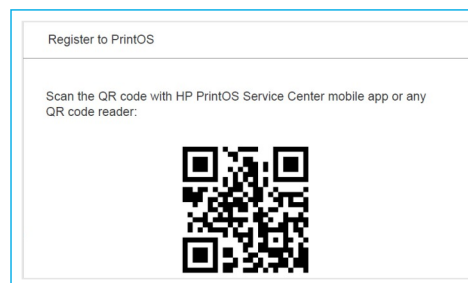
Look for Register to PrintOS and click on Register

Accept the Printer Data Sharing Agreement and Privacy Statement:

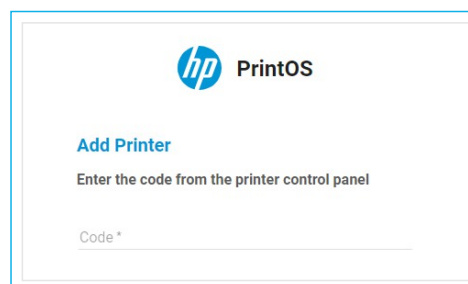


Your printer will now generate a QR code and is ready to be added to PrintOS directly from your mobile device!

Scan the QR code with your smartphone/tablet using either the camera or a QR scanner app.



Alternatively, you may head over to <https://www.printos.com/activate/lf> and activate your printer with a security code, found in the previous QR code generation section.



Great, you're all done! You should now be redirected to the HP PrintOS Sign-In/Sign-Up page.

If you need to complete the initial sign up process, head over to the article [“How to sign up to HP PrintOS in 3 easy steps”](#) to continue.